

# ROAD INDEX

C.V. = CHARDON VILLAGE

<b>A</b>	ALLYND BLVD. C.V.	<b>H cont</b>	HENNING DR. C6	<b>P cont</b>	PINE MANOR (PRIVATE) E3
	AUBURN RD. CI-D6		HERMITAGE RD. B1-C3		PARKER COURT D5
	AMBERWOOD (PRIVATE) F3		HILLTOP DR. C.V.	<b>Q</b>	
			HOSFORD RD. D3-E3		
			HUNTINGTON ST. C.V.		
			HOWARD DR. B6		
			HICKORY HOLLOW DR. E2		
<b>B</b>	BASQUIN DR. C.V.			<b>R</b>	RAVENNA RD. E1-F6
	BATTLES CT. C.V.				ROBINSON RD. E2-F4
		<b>I</b>			
<b>C</b>	CAMBRIDGE RD. C2				
	CHERRY HOLLOW DR. E2				
	CANFIELD RD. C.V.				
	CARSON DR. C.V.	<b>J</b>	JOYACRE LN. E4	<b>S</b>	SEVENTH AVE. C.V.
	CENTER ST. C.V.		JUBILLE DR. B5		SOUTH HAMBDEN ST. C.V.
	CHARDON AVE. C.V.		JANDA PL. C.V.		SOUTH ST. C.V.
	CHARDON ROAD A6-F5				STUKEY LN. A5
	CHERRY AVE. C.V.				S. WINTERGREEN DR. E4-F4
	CLARIDON RD. C.V.				SYLVIA DR. C.V.
	CLARK RD. C2-F1	<b>K</b>	KIRTLAND RD. A4-B5		SUNSHINE DR. C-2
	COLBURN RD. DI-E1		KAREN DR. C.V.	<b>T</b>	TILDEN AVE. C.V.
	COURT ST. C.V.				THWING RD. A6-E6
	CRESTRIDGE DR. E4				
	CYNTHIA DR. C.V.				
	CLARKWOOD DR. E4	<b>L</b>	LAKE AVE. C.V.		
	CUTTY SARK DR. A6		LITTLE MOUNTAIN RD. A1-B1	<b>U</b>	
	CRICKETT DR. C.V.				
	CROCKER BLVD. C.V.				
	CALICO LN. B5				
<b>D</b>	DANIELS DR. C.V.			<b>V</b>	
	DOWNING DR. C.V.				
	DUSTY LANE C-2				
		<b>M</b>	MEMORIAL DR. C.V.		
			MENTOR RD. A1-E5		
			MITCHELLS MILLS RD. A3-C4		
			MOFFET AVE. C.V.	<b>W</b>	WASHINGTON ST. C.V.
			MOUNTAINVIEW DR. C2		WATER ST. C.V.
			MEADOW DR. E4		WELK RD. A5
			MYRA DR. C.V.		WILDER RD. C4-C5
<b>E</b>	EAST KING ST. C.V.				WILSON MILLS RD. E6
					WILSON MILLS RD. C.V.
					WINTERGREEN DR. E4
<b>F</b>	FERRIS AVE. C.V.	<b>N</b>	NORTH HAMBDEN ST. C.V.		WISNER RD. A6-B2
	FIFTH AVE. C.V.		N. WINTERGREEN DR. E4		WOODIN RD. E4-F4
	FOX WOOD DRIVE D3		NORTH WOODS CIR. B6		WOODVIEW DR. F4
	FOREST OAKS DR. B6				
	FOX MEADOW LN. D3				
<b>G</b>	GOODRICH CT. C.V.	<b>O</b>	OAK HOLLOW DR. D1	<b>XYZ</b>	
	GRANT ST. C.V.		OLMAR DR. C6		
	GRISWOLD RD. B2				
		<b>P</b>	PARK AVE. C.V.		
			PEARL RD. E2-F2		
			PINEGATE DR. B-8		
<b>H</b>	HELMUT DR. C6				

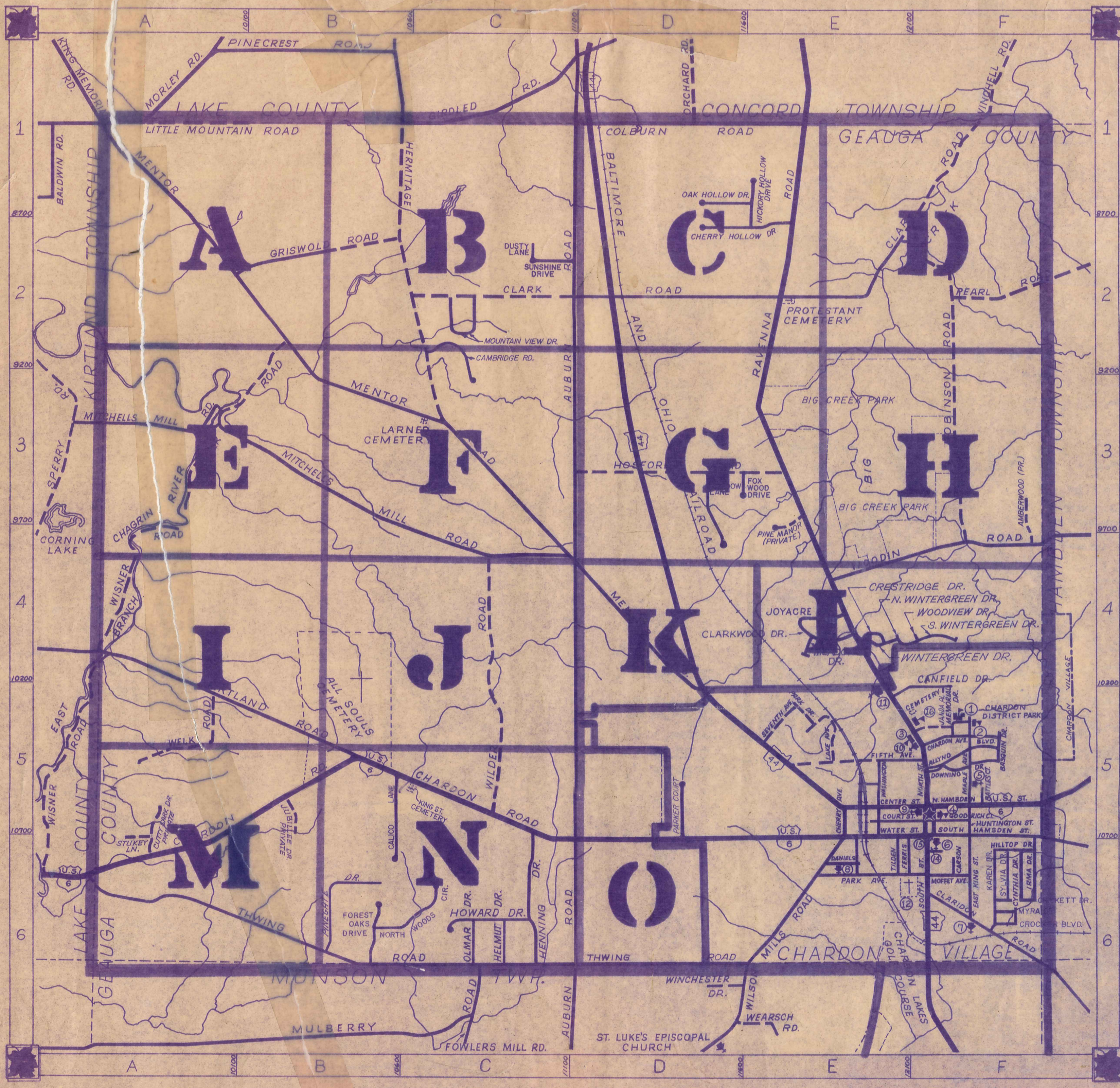
- ① CHARDON HIGH SCHOOL
- ② CHARDON MAPLE ELEM. SCHOOL
- ③ SAINT MARY'S ELEM. SCHOOL
- ④ PARK ELEM. SCHOOL
- ⑤ CHURCH OF CHRIST
- ⑥ PILGRIM CHRISTIAN CHURCH
- ⑦ KINGDOM HALL OF JEHOVAHS WITNESSES
- ⑧ CHRISTIAN SCIENCE SOCIETY
- ⑨ CHARDON ASSEMBLY OF GOD CH.
- ⑩ SAINT MARY'S CHURCH
- ⑪ CHARDON METHODIST CHURCH
- ⑫ CHARDON VILLAGE CEMETERY
- ⑬ GEauga COUNTY COURT HOUSE
- ⑭ UNITED STATES POST OFFICE
- ⑮ CHARDON VOL. FIRE DEPT.
- ⑯ CHARDON MIDDLE SCHOOL

## CHARDON TOWNSHIP

SCALE: 1" = 2000'

ROBERT E. PHILLIPS,  
GEAUGA COUNTY ENGINEER

- UNPAVED ROAD
- PAVED ROAD
- RAILROAD
- TOWNSHIP LINE
- COUNTY LINE
- CORPORATION LINE

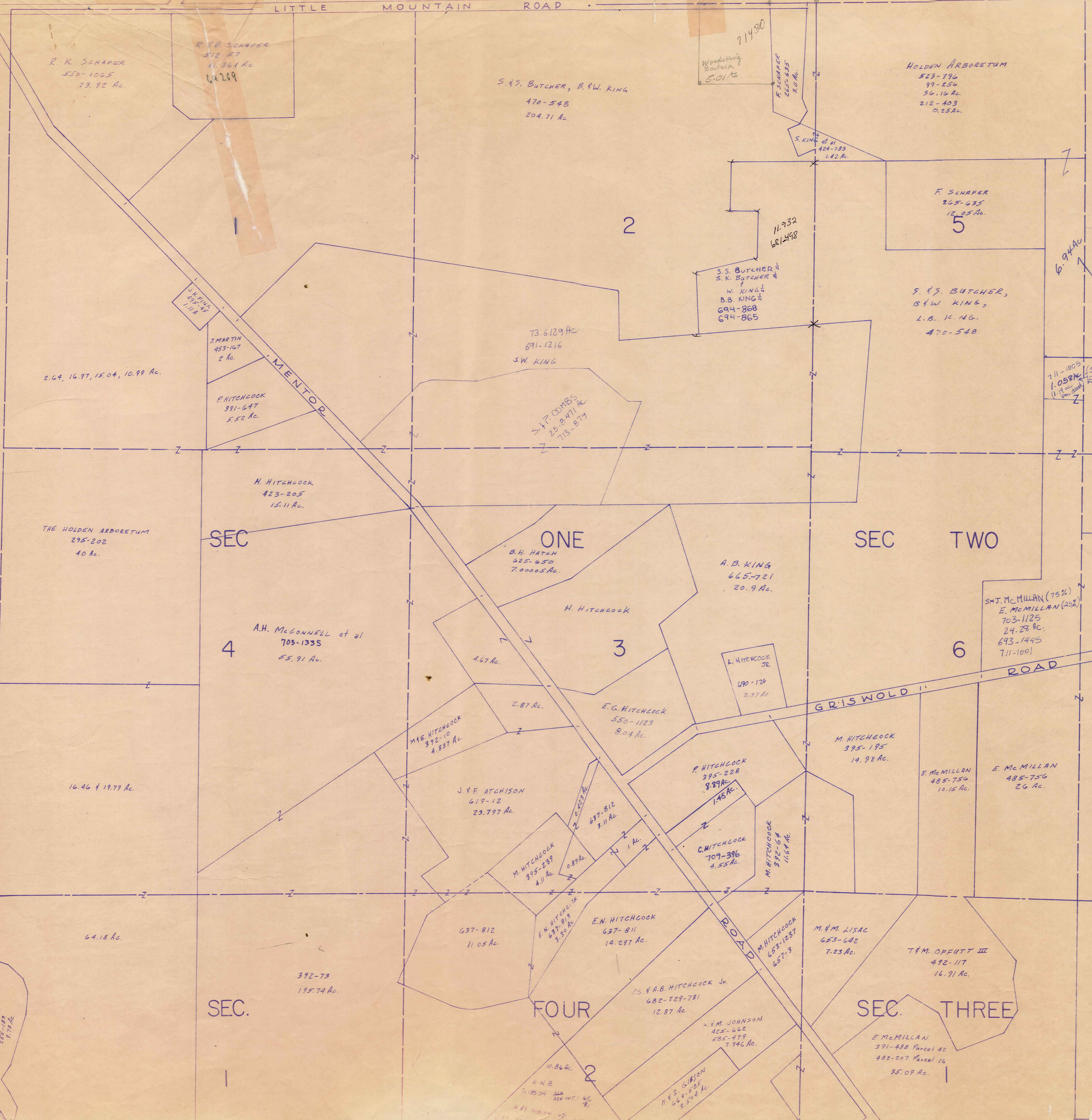


done 5-6-93

L A K E C O N C O R D T W P. C O U N T Y

LITTLE MOUNTAIN ROAD

L A K E R T L A N D C O U N T Y I L L.



SCALE 1" = 300'  
JAN. 1, 1984

CHARDON TWP "A"

A	B	C	D
E	F	G	H
I	J	K	L
M	N	O	P

R. K. SCHAFER  
550-1065  
23.92 Ac.

R. K. SCHAFER  
512-87  
11.861 Ac.  
6269

S. F. BUTCHER, B. W. KING  
470-548  
204.71 Ac.

71430  
Woods King  
Butcher  
5.01 Ac.

HOLDEN ARBORETUM  
523-796  
99-256  
36.16 Ac.  
212-403  
0.25 Ac.

F. SCHAFER  
265-635  
12.85 Ac.

S. S. BUTCHER &  
S. K. BUTCHER &  
W. KING &  
B. B. KING &  
694-868  
694-865

S. F. BUTCHER,  
B. W. KING,  
L. B. KING.  
470-548

73.6129 Ac  
691-1216  
S. W. KING

S. P. COMBS  
25.841 Ac  
713-874

711-1005  
1.058 Ac  
1.19 ac  
S. & J. McMillan (75%)  
E. McMillan (25%)

2.64, 16.97, 15.04, 10.99 Ac.

S. MARTIN  
453-167  
2 Ac.

P. HITCHCOCK  
391-647  
5.52 Ac.

H. HITCHCOCK  
423-205  
15.11 Ac.

THE HOLDEN ARBORETUM  
295-202  
40 Ac.

SEC

ONE

SEC

TWO

A. H. McCONNELL et al  
705-1335  
55.91 Ac.

B. H. HATCH  
625-650  
7.0005 Ac.

A. B. KING  
665-721  
20.9 Ac.

H. HITCHCOCK

S. J. McMILLAN (75%)  
E. McMILLAN (25%)  
703-1125  
24.28 Ac.  
693-1445  
711-1001

4

3

6

16.46 & 19.79 Ac.

M. E. HITCHCOCK  
392-10  
4.837 Ac.

J. & F. ATCHISON  
619-12  
23.797 Ac.

E. G. HITCHCOCK  
550-1123  
8.04 Ac.

L. HITCHCOCK JR.  
690-126  
2.97 Ac.

GRISWOLD ROAD

M. HITCHCOCK  
395-195  
14.98 Ac.

E. McMILLAN  
485-750  
10.15 Ac.

E. McMILLAN  
485-756  
26 Ac.

J. & F. ATCHISON  
619-12  
23.797 Ac.

M. HITCHCOCK  
395-239  
4.11 Ac.

E. N. HITCHCOCK  
637-812  
3.11 Ac.

E. N. HITCHCOCK  
637-811  
14.297 Ac.

P. HITCHCOCK  
395-228  
8.39 Ac.  
1.45 Ac.

C. HITCHCOCK  
709-396  
4.55 Ac.

M. HITCHCOCK  
392-64  
11.64 Ac.

64.18 Ac.

392-73  
175.74 Ac.

637-812  
11.05 Ac.

E. N. HITCHCOCK  
637-811  
14.297 Ac.

T. S. & A. B. HITCHCOCK Jr.  
682-729-731  
12.87 Ac.

F. M. JOHNSON  
425-602  
585-479  
746 Ac.

M. HITCHCOCK  
653-1287  
657-3

M. & M. LISAC  
653-642  
7.23 Ac.

T. F. M. OFFUTT III  
492-117  
16.71 Ac.

SEC.

FOUR

SEC.

THREE

E. McMillan  
391-488  
PARCEL 36A  
PARCEL 13  
103.16 Ac.

E. McMILLAN  
391-488 Parcel 42  
488-207 Parcel 16  
35.09 Ac.

LAKE

GIRDLED RD.

CONCORD TOWNSHIP

COUNTY

20 Ac.

6.70 Ac.

75.05 Ac.

H. Sandburg Crile

485-544  
501-678  
512-416  
524-371

4

E. McMillan (25%)  
S.S. McMillan (75%)

703-1117  
703-1118  
703-1119  
703-1120  
703-1121  
703-1122  
703-1123  
703-1124  
703-1125  
703-1126  
703-1127  
703-1128  
703-1129  
703-1130  
703-1131  
703-1132  
703-1133  
703-1134  
703-1135  
703-1136  
703-1137  
703-1138  
703-1139  
703-1140  
703-1141  
703-1142  
703-1143  
703-1144  
703-1145  
703-1146  
703-1147  
703-1148  
703-1149  
703-1150  
703-1151  
703-1152  
703-1153  
703-1154  
703-1155  
703-1156  
703-1157  
703-1158  
703-1159  
703-1160  
703-1161  
703-1162  
703-1163  
703-1164  
703-1165  
703-1166  
703-1167  
703-1168  
703-1169  
703-1170  
703-1171  
703-1172  
703-1173  
703-1174  
703-1175  
703-1176  
703-1177  
703-1178  
703-1179  
703-1180  
703-1181  
703-1182  
703-1183  
703-1184  
703-1185  
703-1186  
703-1187  
703-1188  
703-1189  
703-1190  
703-1191  
703-1192  
703-1193  
703-1194  
703-1195  
703-1196  
703-1197  
703-1198  
703-1199  
703-1200

E. McMillan  
391-488  
Parcel 26  
Parcel 6  
94.00 Ac.

E. McMillan (25%)  
S.S. McMillan (75%)  
Parcel 40  
Parcel 15  
34.29 Ac.

C.M. Driggs  
ESTATE OF  
F. Hosmer  
681-262  
273  
284  
295

Parcel 40  
Parcel 23  
35.00 Ac.

710-474  
431-981  
1.5A  
B. Greenwald  
3.5 Ac.

710-476  
DAVID A. WEAVER

229-131 J.F. Fifolt 5 Ac.

218-192 5 Ac.

220-258 J.F. Fifolt 5 Ac.

223-195 J.F. Fifolt 5 Ac.

426-115 D.C. & J.A. Janacek 5 Ac.

550-795 3.75 Ac. R. & G. Yarshan

\*3 2.50 Ac.

#1 D. Uscheack 576-1326 5 Ac.

41-349 H. Baker 0.22 Ac.

2

705-941  
223-289 C. Wierbert 34.03 Ac.

P. J. STEFANKO

16.682 Ac 706-1246

Z. Spencer

710-541  
MICHAEL R. WEAVER 16.070 Ac.

710-1210  
HARRY T. HOBBY & VICKI A. VESEL 5.008 Ac.

J.R. & M.J. LOWE 5.724 Ac.  
691-201 J.A. & M.J. LOWE

669-1052  
N.J. ORDS 3.39

553-1327  
R. & J. Downs 1.61

SECTION

391-488 Parcel 30  
Parcel 7  
77.065  
TOTAL 91.35 Ac.

S.S. McMillan

Parcel 19

653-137-8

2

Parcel 2  
24.28 Ac.  
E. McMillan (50%)  
S.J. McMillan (50%)  
703-1125

GRISWOLD ROAD

26 Ac  
485-756

485-756

23.95 Ac.  
Parcel 1

59.75 Ac.  
Parcel 23

E. McMillan

485-756

SECTION

THREE

E. McMillan

103.16 Ac.  
391-488 Parcel 36A  
Parcel 13

AS4-804

E. McMillan et al

17.05

TRACT FOUR

TWO

TRACT

14

ONE

13

Maple Grove Est #1 Vol 6 Pg 147

492-617 A.S. Morrison 1.4 Ac	492-618 R.M. Gallagher 1.4 Ac	492-619 A.S. Morrison 1.4 Ac	492-620 A.S. Morrison 1.4 Ac	492-621 A.S. Morrison 1.4 Ac	492-622 A.S. Morrison 1.4 Ac	492-623 A.S. Morrison 1.4 Ac	492-624 A.S. Morrison 1.4 Ac	492-625 A.S. Morrison 1.4 Ac	492-626 A.S. Morrison 1.4 Ac	492-627 A.S. Morrison 1.4 Ac	492-628 A.S. Morrison 1.4 Ac	492-629 A.S. Morrison 1.4 Ac	492-630 A.S. Morrison 1.4 Ac	492-631 A.S. Morrison 1.4 Ac	492-632 A.S. Morrison 1.4 Ac	492-633 A.S. Morrison 1.4 Ac	492-634 A.S. Morrison 1.4 Ac	492-635 A.S. Morrison 1.4 Ac	492-636 A.S. Morrison 1.4 Ac	492-637 A.S. Morrison 1.4 Ac	492-638 A.S. Morrison 1.4 Ac	492-639 A.S. Morrison 1.4 Ac	492-640 A.S. Morrison 1.4 Ac	492-641 A.S. Morrison 1.4 Ac	492-642 A.S. Morrison 1.4 Ac	492-643 A.S. Morrison 1.4 Ac	492-644 A.S. Morrison 1.4 Ac	492-645 A.S. Morrison 1.4 Ac	492-646 A.S. Morrison 1.4 Ac	492-647 A.S. Morrison 1.4 Ac	492-648 A.S. Morrison 1.4 Ac	492-649 A.S. Morrison 1.4 Ac	492-650 A.S. Morrison 1.4 Ac	492-651 A.S. Morrison 1.4 Ac	492-652 A.S. Morrison 1.4 Ac	492-653 A.S. Morrison 1.4 Ac	492-654 A.S. Morrison 1.4 Ac	492-655 A.S. Morrison 1.4 Ac	492-656 A.S. Morrison 1.4 Ac	492-657 A.S. Morrison 1.4 Ac	492-658 A.S. Morrison 1.4 Ac	492-659 A.S. Morrison 1.4 Ac	492-660 A.S. Morrison 1.4 Ac	492-661 A.S. Morrison 1.4 Ac	492-662 A.S. Morrison 1.4 Ac	492-663 A.S. Morrison 1.4 Ac	492-664 A.S. Morrison 1.4 Ac	492-665 A.S. Morrison 1.4 Ac	492-666 A.S. Morrison 1.4 Ac	492-667 A.S. Morrison 1.4 Ac	492-668 A.S. Morrison 1.4 Ac	492-669 A.S. Morrison 1.4 Ac	492-670 A.S. Morrison 1.4 Ac	492-671 A.S. Morrison 1.4 Ac	492-672 A.S. Morrison 1.4 Ac	492-673 A.S. Morrison 1.4 Ac	492-674 A.S. Morrison 1.4 Ac	492-675 A.S. Morrison 1.4 Ac	492-676 A.S. Morrison 1.4 Ac	492-677 A.S. Morrison 1.4 Ac	492-678 A.S. Morrison 1.4 Ac	492-679 A.S. Morrison 1.4 Ac	492-680 A.S. Morrison 1.4 Ac	492-681 A.S. Morrison 1.4 Ac	492-682 A.S. Morrison 1.4 Ac	492-683 A.S. Morrison 1.4 Ac	492-684 A.S. Morrison 1.4 Ac	492-685 A.S. Morrison 1.4 Ac	492-686 A.S. Morrison 1.4 Ac	492-687 A.S. Morrison 1.4 Ac	492-688 A.S. Morrison 1.4 Ac	492-689 A.S. Morrison 1.4 Ac	492-690 A.S. Morrison 1.4 Ac	492-691 A.S. Morrison 1.4 Ac	492-692 A.S. Morrison 1.4 Ac	492-693 A.S. Morrison 1.4 Ac	492-694 A.S. Morrison 1.4 Ac	492-695 A.S. Morrison 1.4 Ac	492-696 A.S. Morrison 1.4 Ac	492-697 A.S. Morrison 1.4 Ac	492-698 A.S. Morrison 1.4 Ac	492-699 A.S. Morrison 1.4 Ac	492-700 A.S. Morrison 1.4 Ac
------------------------------------	-------------------------------------	------------------------------------	------------------------------------	------------------------------------	------------------------------------	------------------------------------	------------------------------------	------------------------------------	------------------------------------	------------------------------------	------------------------------------	------------------------------------	------------------------------------	------------------------------------	------------------------------------	------------------------------------	------------------------------------	------------------------------------	------------------------------------	------------------------------------	------------------------------------	------------------------------------	------------------------------------	------------------------------------	------------------------------------	------------------------------------	------------------------------------	------------------------------------	------------------------------------	------------------------------------	------------------------------------	------------------------------------	------------------------------------	------------------------------------	------------------------------------	------------------------------------	------------------------------------	------------------------------------	------------------------------------	------------------------------------	------------------------------------	------------------------------------	------------------------------------	------------------------------------	------------------------------------	------------------------------------	------------------------------------	------------------------------------	------------------------------------	------------------------------------	------------------------------------	------------------------------------	------------------------------------	------------------------------------	------------------------------------	------------------------------------	------------------------------------	------------------------------------	------------------------------------	------------------------------------	------------------------------------	------------------------------------	------------------------------------	------------------------------------	------------------------------------	------------------------------------	------------------------------------	------------------------------------	------------------------------------	------------------------------------	------------------------------------	------------------------------------	------------------------------------	------------------------------------	------------------------------------	------------------------------------	------------------------------------	------------------------------------	------------------------------------	------------------------------------	------------------------------------	------------------------------------	------------------------------------

Ameritrust Company  
681-685

REK  
Pierce  
703-975

1.871A 2.129 A 2.133A 2.122 A

3.58-1143  
T.E. & C.M.  
Rockafellow

270-615

D. & A. Rockafellow

SCALE 1" = 300'  
JAN. 1, 1984

CHARDON TWP "B"

A	B	C	D
E	F	G	H
I	J	K	L
M	N	O	P



1.25 Ac  
418-23

ROAD

ALBURY ROAD

EH. Hosmer Subdivision No. 1

ROAD

CLARK

ROAD

ROAD

ROAD

ROAD

ROAD

ROAD

ROAD

ROAD

ROAD

ROAD

ROAD

ROAD

ROAD

ROAD

ROAD

ROAD

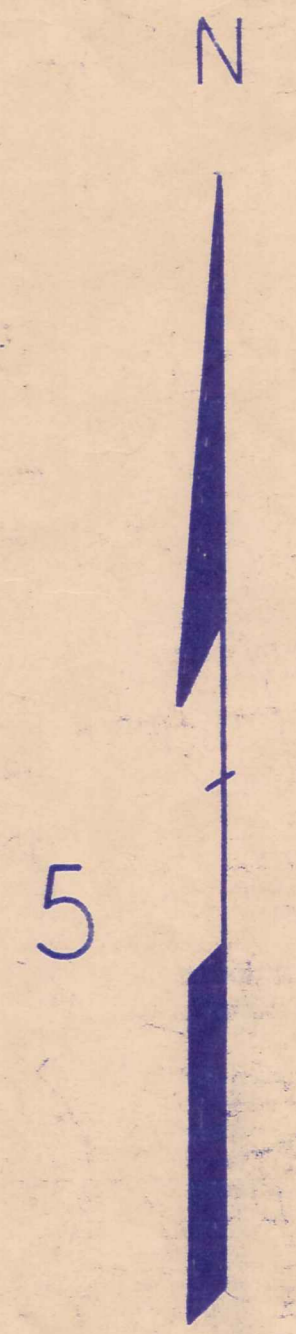
ROAD

L A K E C O U N T Y

260-133



T R A C T



SCALE 1" = 300'

A	B	C	D
E	F	G	H
I	J	K	L
M	N	O	P

CHARDON TWP.

10 JAN. 1 1983

14-70  
Estate of  
F.H. Hosmer  
Sub Divisions No. 1

14 B. Munson 708-161  
2082A  
13 712-1242  
2314A  
12 A.J. Costz 713-854  
2155A

2142A 2151A 2156A 2167A 2176A 2191A

2142A 2151A 2156A 2167A 2176A 2191A

2142A 2151A 2156A 2167A 2176A 2191A

2142A 2151A 2156A 2167A 2176A 2191A

2142A 2151A 2156A 2167A 2176A 2191A

2142A 2151A 2156A 2167A 2176A 2191A

2142A 2151A 2156A 2167A 2176A 2191A

2142A 2151A 2156A 2167A 2176A 2191A

2142A 2151A 2156A 2167A 2176A 2191A

2142A 2151A 2156A 2167A 2176A 2191A

2142A 2151A 2156A 2167A 2176A 2191A

2142A 2151A 2156A 2167A 2176A 2191A

2142A 2151A 2156A 2167A 2176A 2191A

2142A 2151A 2156A 2167A 2176A 2191A

2142A 2151A 2156A 2167A 2176A 2191A

2142A 2151A 2156A 2167A 2176A 2191A

2142A 2151A 2156A 2167A 2176A 2191A

2142A 2151A 2156A 2167A 2176A 2191A

2142A 2151A 2156A 2167A 2176A 2191A

2142A 2151A 2156A 2167A 2176A 2191A

2142A 2151A 2156A 2167A 2176A 2191A

2142A 2151A 2156A 2167A 2176A 2191A

2142A 2151A 2156A 2167A 2176A 2191A

2142A 2151A 2156A 2167A 2176A 2191A

2142A 2151A 2156A 2167A 2176A 2191A

2142A 2151A 2156A 2167A 2176A 2191A

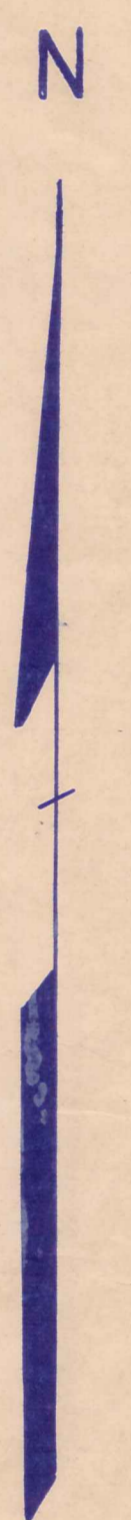
2142A 2151A 2156A 2167A 2176A 2191A

2142A 2151A 2156A 2167A 2176A 2191A

2142A 2151A 2156A 2167A 2176A 2191A

# LAKE COUNTY

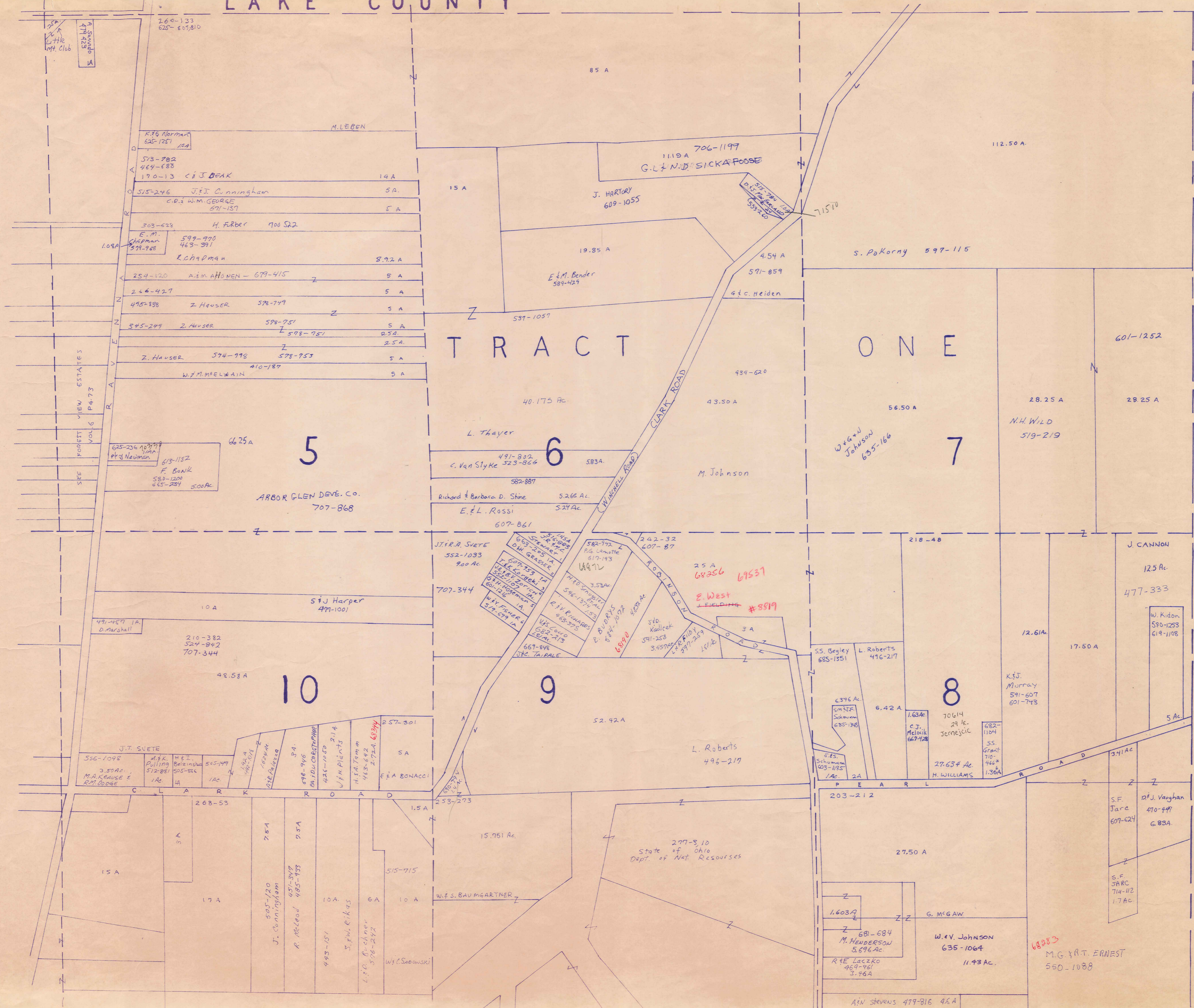
HAMB DEN TOWNSHIP



SCALE 1"=300'  
JAN. 1984

A	B	C	D
E	F	G	H
I	J	K	L
M	N	O	P

CHARDON TWP. "D"



260-133  
625-609,810

K.R.G. Norman  
625-1251  
10A

573-782  
464-683  
170-13 C & J BEAK

515-246 J.F.I. Cunningham  
C.R. & W.M. GEORGE  
571-137

303-628 H. Farber 700 S22  
E.M. Chapman  
579-268

254-120 A.M. AHONEN - 679-415  
266-427  
495-888 Z. Hauser 578-749  
545-249 Z. Hauser 578-751  
Z. Hauser 574-998 578-753  
W.F.M. MELWAIN 410-187

625-226 10A  
F. Bank  
580-1200  
655-234 500Ac.

491-457 1A  
D. Marshall

210-382  
524-842  
707-344

491-457 1A  
D. Marshall

576-1098  
M.A. KAUSER &  
R.M. DOUGLAS

M.B.K. Pulling  
572-881  
1Ac

H.E.I. Belzinska  
505-826  
1Ac

505-120  
J. Cunningham

485-451  
R. McLeod

485-451  
S. W. R. K. 45

578-242  
L. D. Buchner

515-715  
W.F. S. BAUMGARTNER

15.761 Ac.

1.603.7

681-684  
M. HENDERSON  
5696Ac

R.E. Laczko  
469-761  
3.98A

W.V. JOHNSON  
635-1064  
11.93 Ac.

277-810  
State of Ohio  
Dept. of Nat. Resources

203-212

1.603.7

681-684  
M. HENDERSON  
5696Ac

R.E. Laczko  
469-761  
3.98A

W.V. JOHNSON  
635-1064  
11.93 Ac.

277-810  
State of Ohio  
Dept. of Nat. Resources

M. LEGEN

19A

5A

5A

8.92 A

5 A

5 A

5 A

5 A

5 A

5 A

5 A

5 A

5 A

5 A

5 A

5 A

5 A

5 A

5 A

5 A

5 A

5 A

5 A

5 A

5 A

5 A

5 A

5 A

15 A

19.85 A

4.54 A

571-859

4.54 A

4.54 A

4.54 A

4.54 A

4.54 A

4.54 A

4.54 A

4.54 A

4.54 A

4.54 A

4.54 A

4.54 A

4.54 A

4.54 A

4.54 A

4.54 A

4.54 A

4.54 A

4.54 A

4.54 A

4.54 A

4.54 A

4.54 A

4.54 A

4.54 A

85 A

706-1197  
1118A  
G.L. & N.D. SICKA POOSE

J. HARTORY  
609-1055

E.M. Bender  
589-429

4.54 A

4.54 A

4.54 A

4.54 A

4.54 A

4.54 A

4.54 A

4.54 A

4.54 A

4.54 A

4.54 A

4.54 A

4.54 A

4.54 A

4.54 A

4.54 A

4.54 A

4.54 A

4.54 A

4.54 A

4.54 A

4.54 A

4.54 A

4.54 A

4.54 A

112.50 A

71570

4.54 A

4.54 A

4.54 A

4.54 A

4.54 A

4.54 A

4.54 A

4.54 A

4.54 A

4.54 A

4.54 A

4.54 A

4.54 A

4.54 A

4.54 A

4.54 A

4.54 A

4.54 A

4.54 A

4.54 A

4.54 A

4.54 A

4.54 A

4.54 A

4.54 A

4.54 A

4.54 A

4.54 A

4.54 A

4.54 A

4.54 A

4.54 A

4.54 A

4.54 A

4.54 A

4.54 A

4.54 A

4.54 A

4.54 A

4.54 A

4.54 A

4.54 A

4.54 A

4.54 A

4.54 A

4.54 A

4.54 A

4.54 A

4.54 A

4.54 A

4.54 A

4.54 A

4.54 A

4.54 A

4.54 A

4.54 A

4.54 A

4.54 A

4.54 A

4.54 A

4.54 A

4.54 A

4.54 A

4.54 A

4.54 A

4.54 A

4.54 A

4.54 A

4.54 A

4.54 A

4.54 A

4.54 A

4.54 A

4.54 A

4.54 A

4.54 A

4.54 A

4.54 A

4.54 A

4.54 A

4.54 A

4.54 A

4.54 A

4.54 A

4.54 A

4.54 A

4.54 A

4.54 A

4.54 A

4.54 A

4.54 A

4.54 A

4.54 A

4.54 A

4.54 A

4.54 A

4.54 A

4.54 A

4.54 A

4.54 A

4.54 A

4.54 A

4.54 A

4.54 A

4.54 A

4.54 A

4.54 A

4.54 A

4.54 A

4.54 A

4.54 A

4.54 A

4.54 A

4.54 A

4.54 A

4.54 A

4.54 A

4.54 A

4.54 A

4.54 A

4.54 A

4.54 A

4.54 A

4.54 A

4.54 A

4.54 A

4.54 A

4.54 A

4.54 A

4.54 A

4.54 A

4.54 A

4.54 A

4.54 A

4.54 A

4.54 A

4.54 A

4.54 A

4.54 A

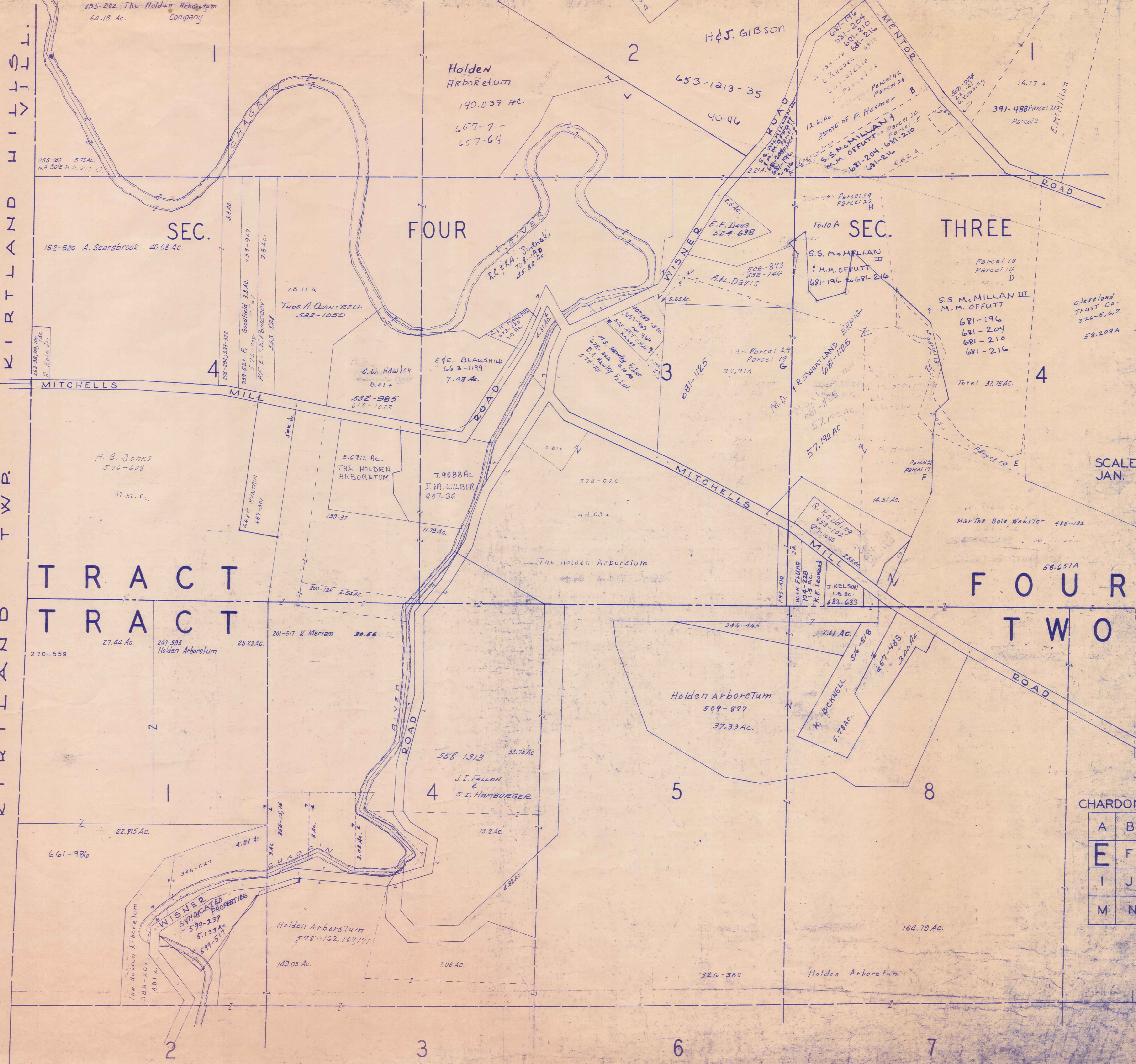
4.54 A

4.54 A

4.54 A

4.54 A

KIRTLAND HILLS  
COUNTY  
TWP.  
KIRTLAND



295-202 The Holden Arboretum Company  
64.18 Ac.

Holden Arboretum  
140.039 Ac.  
657-7-657-64

H&J. GIBSON  
653-1213-35  
40-46

ESTATE OF F. Hosmer  
S.S. McMILLAN  
M.M. OFFUTT  
681-204-681-210  
681-216

SEC. FOUR  
162-620 A. Scarsbrook 40.08 Ac.

SEC. THREE

THOS. A. QUINTRELL  
532-1050  
E.W. HAWLEY  
8.41 A  
532-985  
615-1022

S.S. McMILLAN  
M.M. OFFUTT  
681-196-681-216

S.S. McMILLAN III  
M.M. OFFUTT  
681-196  
681-204  
681-210  
681-216  
Total 37.75 Ac.

MITCHELLS MILL ROAD

WISNER ROAD

MITCHELLS MILL ROAD

ELLETTSVILLE ROAD

TRACT TRACT

TRACT TRACT

270-559  
27.44 Ac.  
247-593 Holden Arboretum  
25.23 Ac.

201-517 K. Meriam  
30.56

Holden Arboretum  
509-877  
37.33 Ac.

K. McMILLAN  
5.7 Ac.

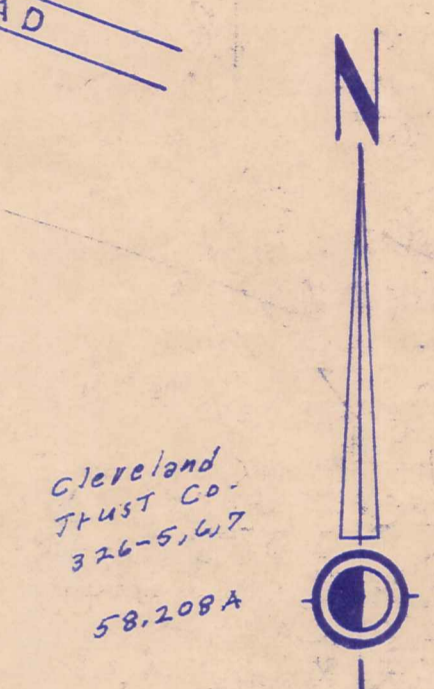
22.915 Ac.

558-1313 33.78 Ac.  
J.I. FALLON & E.I. HAMBURGER

WISNER SYNDICATED PROPERTIES  
599-239  
599-519  
149.03 Ac.

Holden Arboretum  
578-162, 167, 171

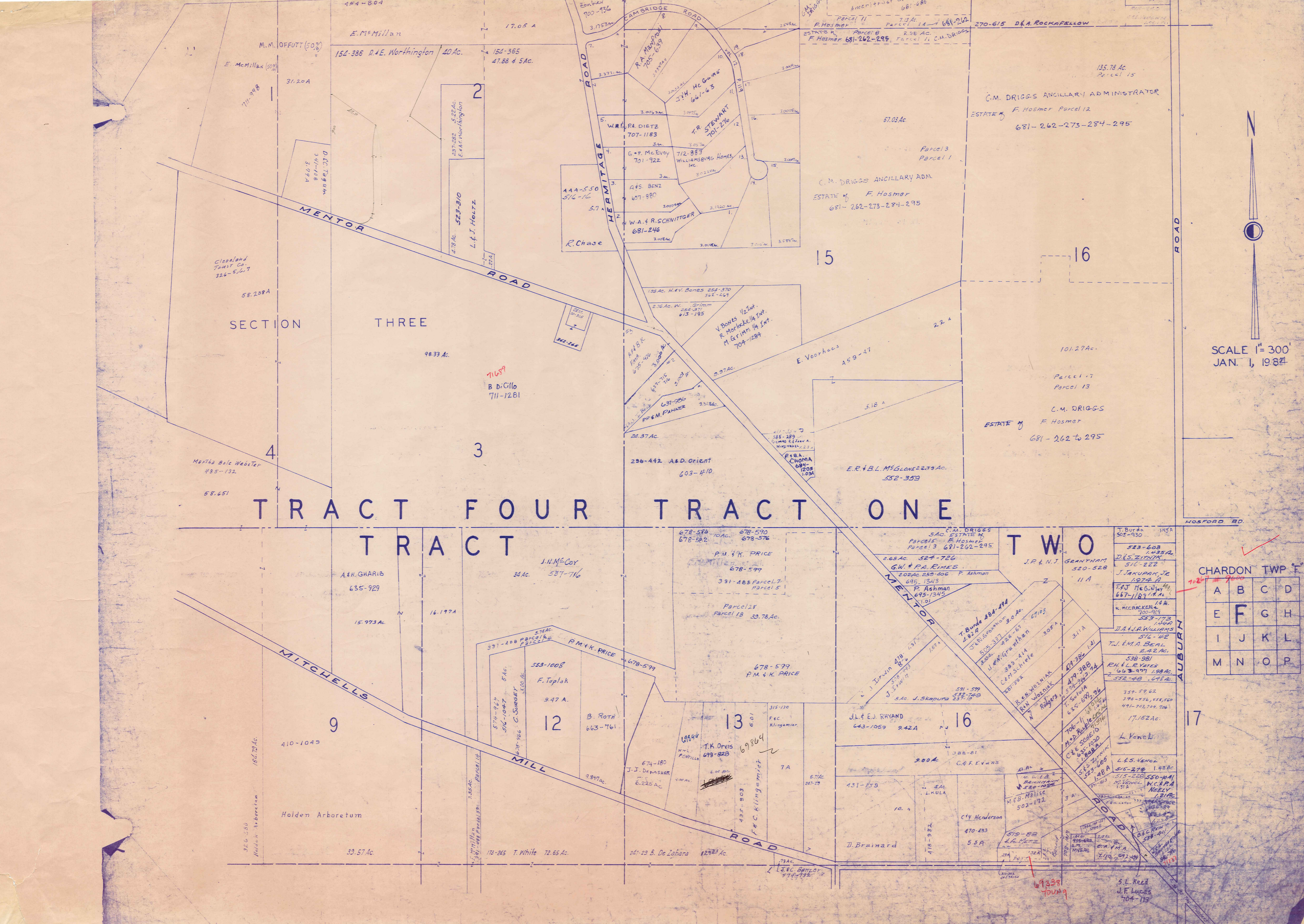
164.73 Ac.  
Holden Arboretum



SCALE 1" = 300'  
JAN. 1, 1984

CHARDON TWP 'E'

A	B	C	D
E	F	G	H
I	J	K	L
M	N	O	P



SECTION THREE

TRACT FOUR TRACT ONE

TRACT TWO

CHARDON TWP F

A	B	C	D
E	F	G	H
I	J	K	L
M	N	O	P

SCALE 1" = 300'  
JAN. 1, 1934

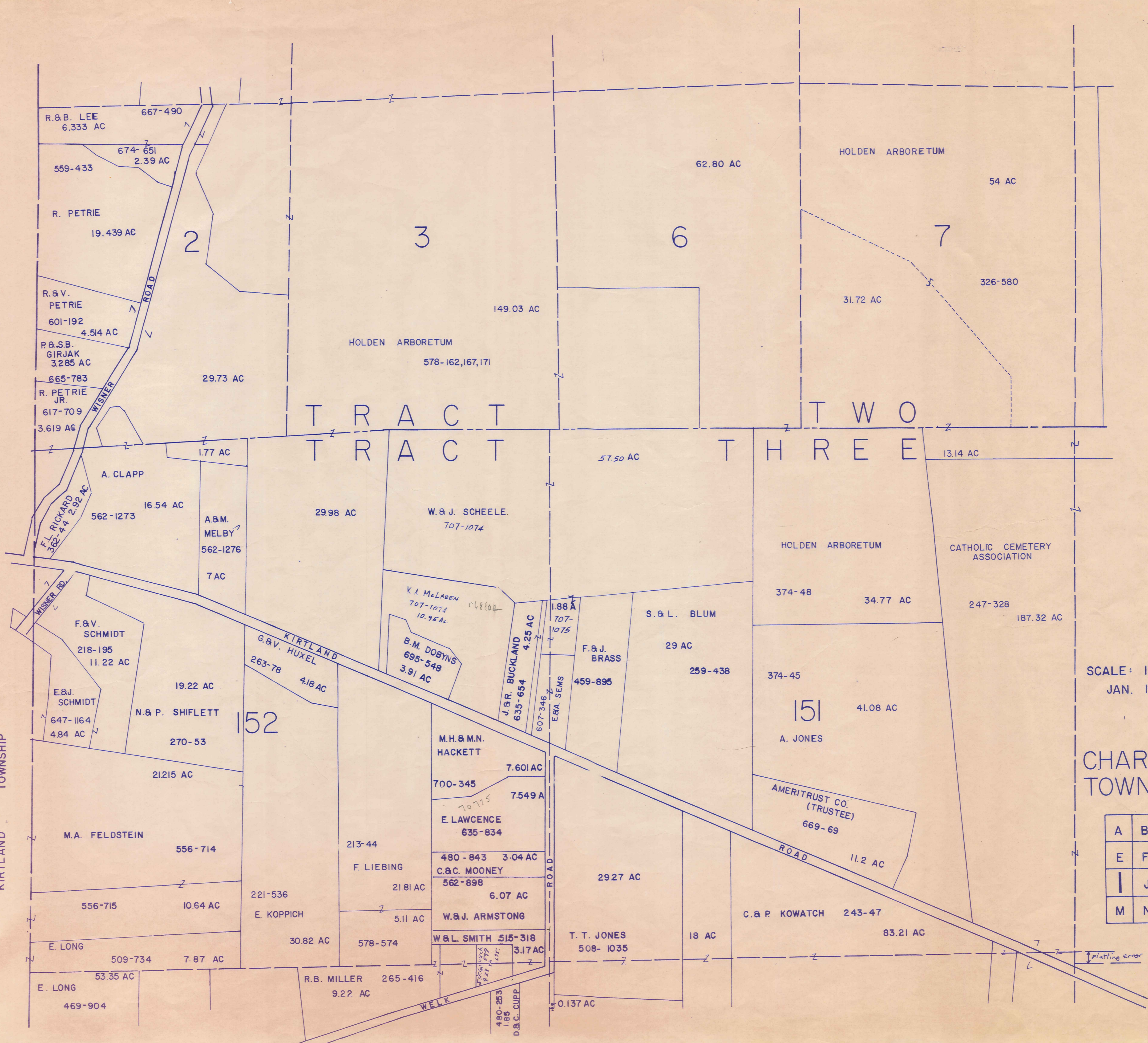




COUNTY

LAKE

KIRTLAND TOWNSHIP



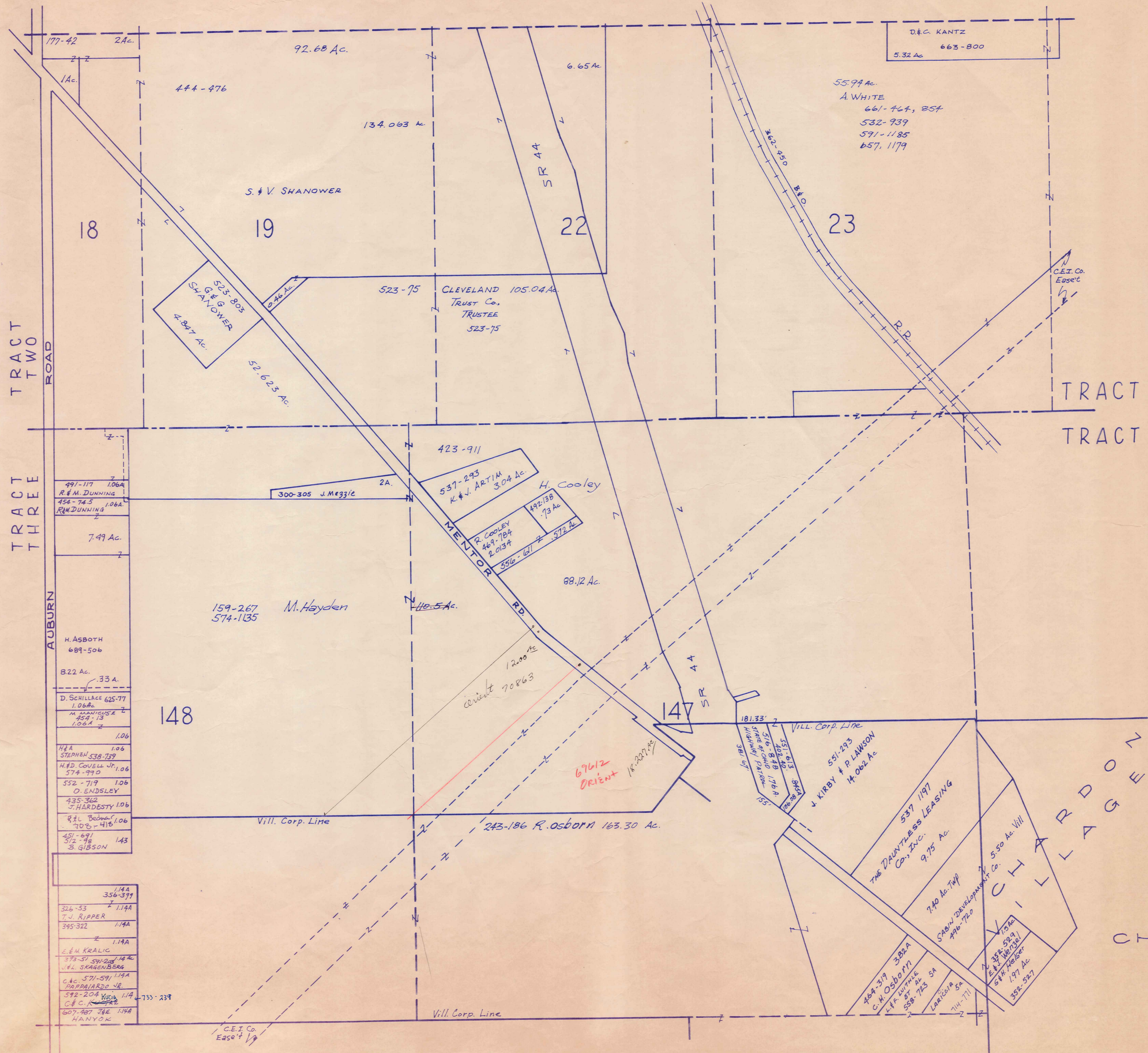
SCALE: 1" = 300'  
JAN. 1984

CHARDON TOWNSHIP "1"

A	B	C	D
E	F	G	H
I	J	K	L
M	N	O	P

plating error





TRACT TWO ROAD

TRACT THREE

AUBURN ROAD

TRACT TWO  
TRACT THREE



SCALE 1/4" = 300 FT.  
JAN. 1, 1984

CHARDON TWP. - K-

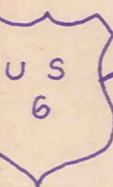
A	B	C	D
E	F	G	H
I	J	K	L
M	N	O	P

- 177-42 2Ac.
- 1Ac.
- 444-976
- 92.68 Ac.
- 134.063 Ac.
- 6.65 Ac.
- 523-803 G & S SHANOWER 4.847 Ac.
- 523-75 0.46 Ac.
- 523-75 CLEVELAND TRUST CO. TRUSTEE 105.04 Ac.
- 523-75
- 5594 Ac. A. WHITE 661-767, 857 532-939 591-1185 657, 1179
- 5.32 Ac. D. C. KANTZ 663-800
- 423-911
- 537-293 K & J. ARTIM 3.04 Ac.
- H. Cooley
- 492188 73 Ac.
- R. COOLEY 469-784 2.013 Ac.
- 356-621 572 Ac.
- 88.12 Ac.
- 159-267 574-1135 M. Hayden
- 40.5 Ac.
- 300-305 J. Mezzio 2A.
- 423-911
- 537-293 K & J. ARTIM 3.04 Ac.
- H. Cooley
- 492188 73 Ac.
- R. COOLEY 469-784 2.013 Ac.
- 356-621 572 Ac.
- 88.12 Ac.
- 1200 Ac. current 70863
- 67612 Orient
- 18.227 Ac.
- 181.33
- VILL. Corp. Line
- 551-293 KIRBY & P. LAWSON 14.062 Ac.
- 537 1197 THE DAUNTLESS LEASING CO., INC. 9.75 Ac.
- 740 Ac. TWP. SABIN DEVELOPMENT CO. 490-720
- 5.50 Ac. Vill. CHARDON
- 332-524 E. & M. Weiser 1.97 Ac.
- 332-527
- 464-374 382A C. H. OSBORN
- K. F. WITTE 558-785
- LARSON SA 714-711
- 144
- 356-379
- 326-53 T. L. RIPPER 1.14A
- 345-322 1.14A
- 1.14A
- E. M. KRALIC 379-57 592-204 14 Ac. J. L. SKAGENBERG
- C. G. 571-591 1.14A PAPPALARDO JR.
- 592-204 KUCIA 1.14 C. & C. 1.14A
- 607-487 J. E. HANYOK 1.14A
- 733-239
- C.E.I. Co. Easement 1/8
- Vill. Corp. Line

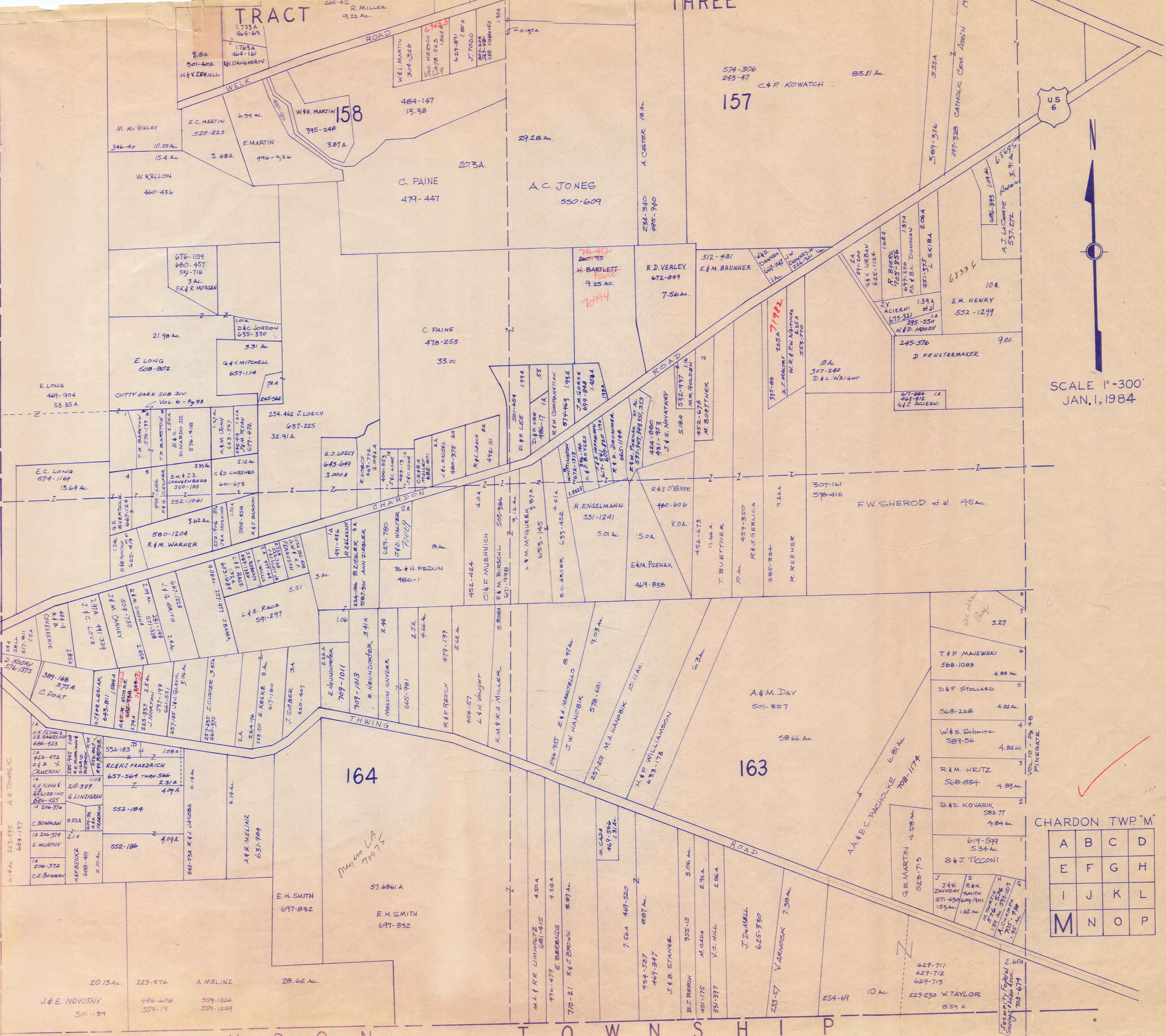


C O U N T Y

TOWNSHIP



L A K E K I R T L A N D



SCALE 1"=300'  
JAN. 1, 1984

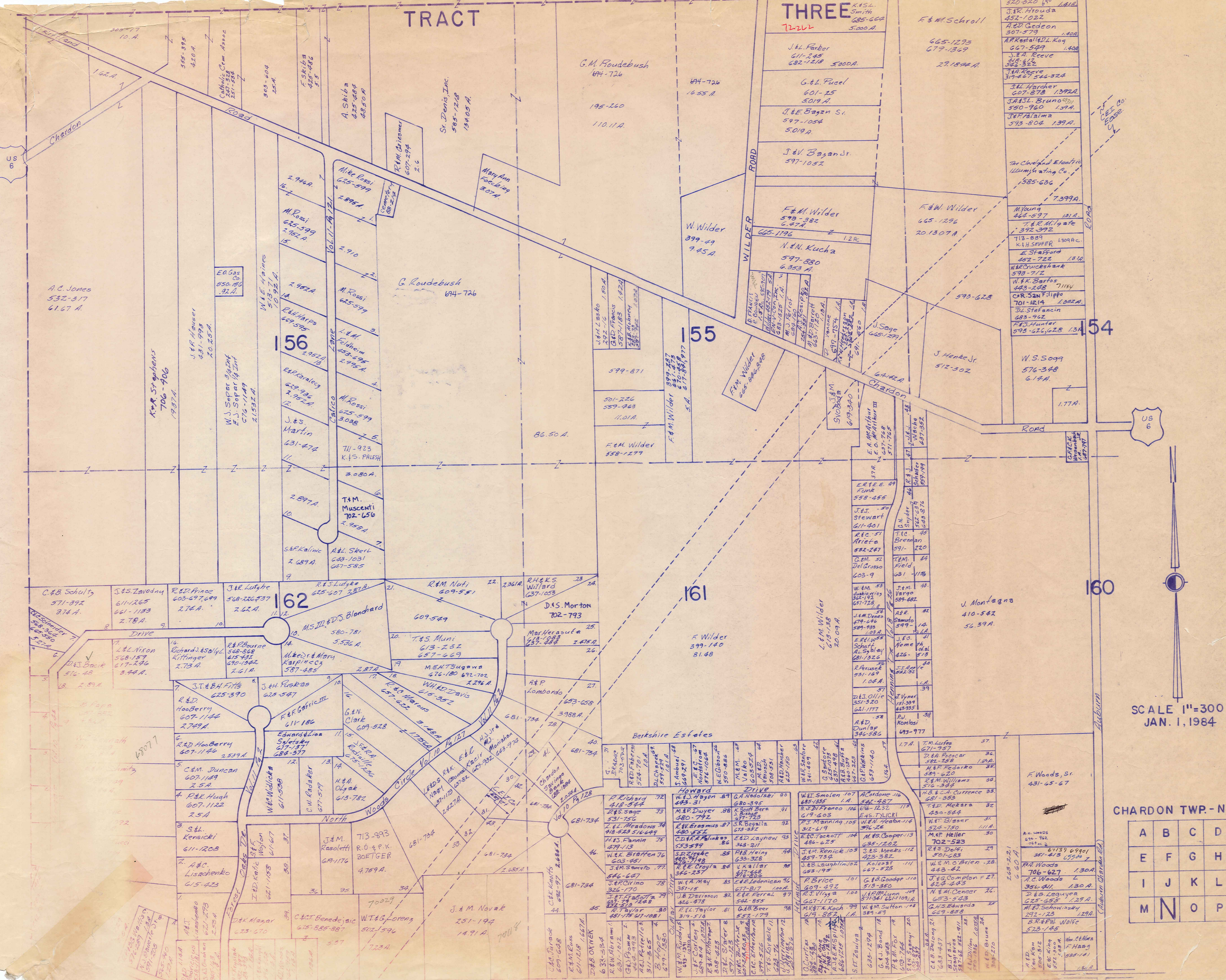
CHARDON TWP "M"

A	B	C	D
E	F	G	H
I	J	K	L
M	N	O	P

Secretary, Federal Savings & Loan Assoc.  
703-674

TRACT

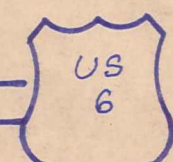
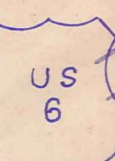
THREE



SCALE 1"=300  
JAN. 1, 1984

CHARDON TWP. - N -

A	B	C	D
E	F	G	H
I	J	K	L
M	N	O	P



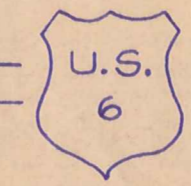
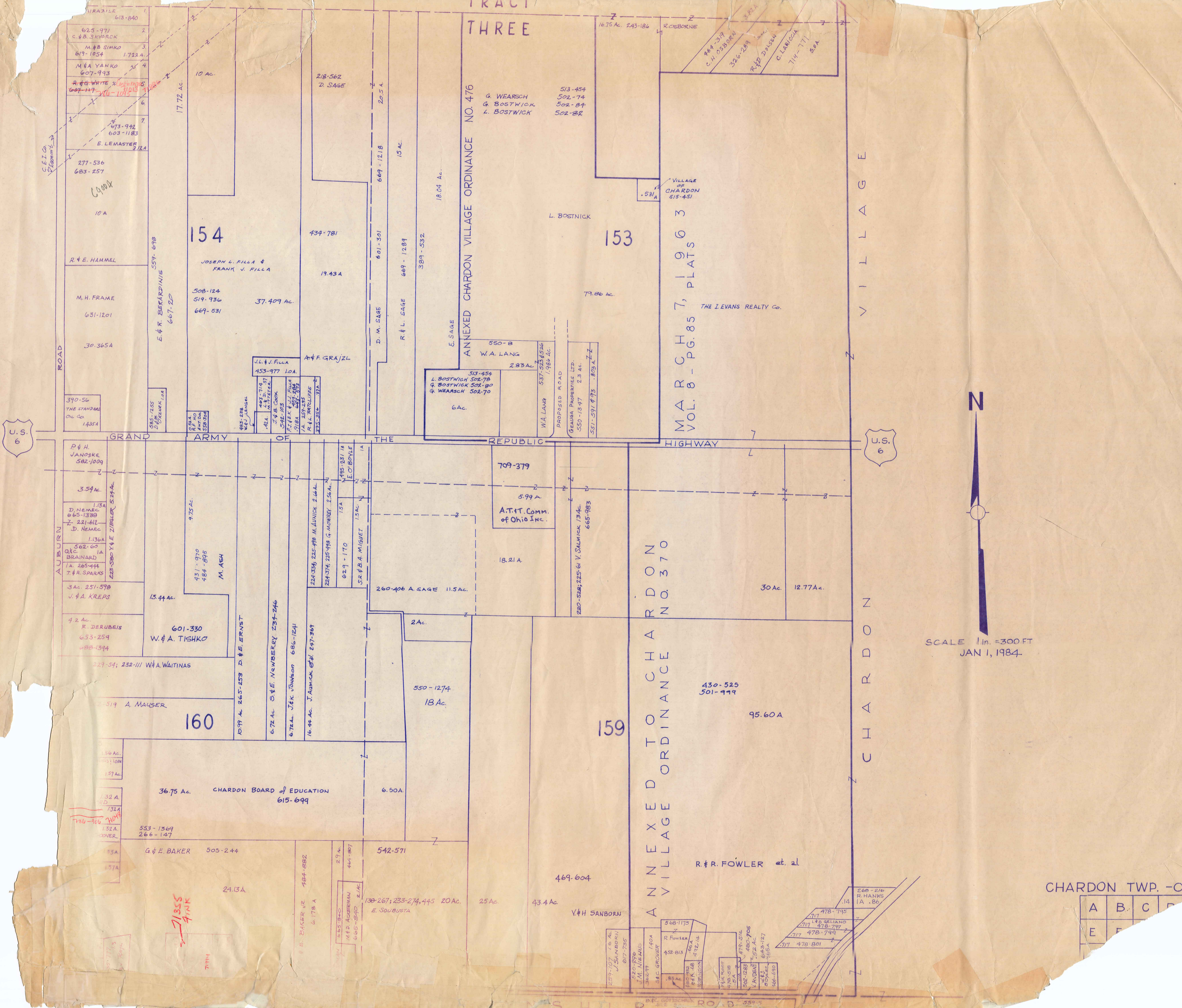
TRACT THREE

ANNEXED CHARDON VILLAGE ORDINANCE NO. 476

ANNEXED TO CHARDON VILLAGE ORDINANCE NO. 370

M.A.R.C.H. 7, PLATS 3 VOL. 8 - PG. 85

VILLAGE CHARDON



SCALE 1 in. = 300 FT  
JAN 1, 1984

CHARDON TWP. - O-

A	B	C	D
E	F	G	H

154

153

160

159

JOSEPH L. FILLA & FRANK V. FILLA  
508-124  
519-936  
669-531  
37.409 AC.

G. WEARSCH  
G. BOSTWICK  
L. BOSTWICK  
513-454  
502-74  
502-84  
502-8R

A.T.I. Comm. of Ohio Inc.  
5.99 A

CHARDON BOARD OF EDUCATION  
615-699

430-525  
501-979  
95.60A

G. & E. BAKER  
505-244

R. & R. FOWLER et. al.

71355  
pink

71944

ROAD

GRAND ARMY OF THE REPUBLIC HIGHWAY

VILLAGE ORDINANCE

R. & R. FOWLER et. al.

ROAD

GRAND ARMY OF THE REPUBLIC HIGHWAY

VILLAGE ORDINANCE

R. & R. FOWLER et. al.